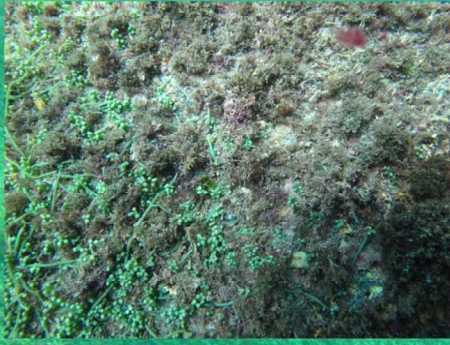


Relevant invasive species of seaweed



Sea grapes

Caulerpa species

MORPHOLOGY



Several morphologies. Green colour. Fronds are rounded or filiform, in groups and connected to each other by stolons, which in turn are attached to substrata by thin rhizoids.

WHERE AND WHEN TO FIND IT

Low intertidal to low subtidal. Up to -60 m. Has not been reported in Ireland so far.

Res Maris

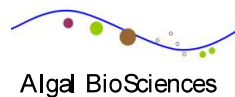
POSSIBLE MISIDENTIFICATIONS

No similar seaweeds to *Caulerpa* species are found in Ireland.

 Valorisation of
invasive seaweed



NUI Galway
OÉ Gaillimh



Algal BioSciences



Research Fund