

Invasive species of seaweed in Ireland

Oyster thief

Colpomenia peregrina

MORPHOLOGY



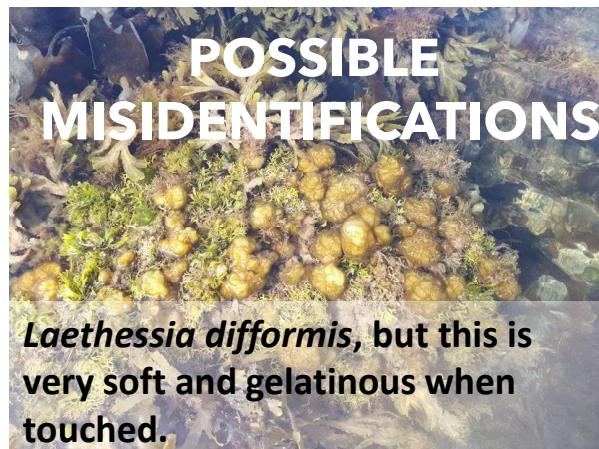
Up to 10 cm in diameter, light brown colour, sinuous shape, rough when touched.

WHERE AND WHEN TO FIND IT



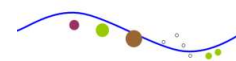
Low intertidal to high subtidal, growing on rocks or on other seaweed. Abundant in Spring.

POSSIBLE MISIDENTIFICATIONS



Laethessia difformis, but this is very soft and gelatinous when touched.

 Valorisation of
invasive seaweed

 Algal BioSciences

 NUI Galway
OÉ Gaillimh

 AXA Research Fund